

**SURPLUS EQUIPMENT OF AN AVIATION ENGINE MANUFACTURER INCLUDING
LOW HOUR 2013 & 2008 MAZAK INTEGRIX 300 CNC TC'S, BERCO CRANKSHAFT
GRINDERS, DAEWOO VMC'S & TC'S, TOOLROOM AND SHOP SUPPORT EQUIPMENT**

BidSpotter.com
See Instructions on Page 3
To Become a Qualified Bidder on the Internet

PUBLIC AUCTION



Surplus to Needs of **CONTINENTAL MOTORS, INC.**

9503 Middlex Drive – San Antonio, TX 78217

Near the San Antonio International Airport

SALE DATE: TUESDAY, JANUARY 10TH, STARTING AT 9:00 AM CST

INSPECTION: MONDAY, JANUARY 9TH, FROM 10:00 AM TO 4:00 PM



Mazak Model Integrex 300 IV CNC Five-Axis Multi-Tasking Turning Center



(2) Daewoo Model DMV-650 CNC Vertical Machining Centers



Daewoo Model Puma 200C CNC Turning Center



10" X 84" Berco Model RAC2130 Crankshaft Grinder



Zeiss Model Contura G2 10.12.6 Coordinate Measuring Machine



Sale Under The Management Of

CINCINNATI INDUSTRIAL AUCTIONEERS

auctioneers | appraisers | since 1961 | cia-auction.com | info@cia-auction.com

2020 Dunlap St., Cincinnati, Ohio 45214 Phone 513-241-9701 Fax 513-241-6760



10" X 60" Berco Model RAC Crankshaft Grinder



(2) 20" X 60" Berco Model RTM260A Crankshaft Grinders



(2) Mazak Model H630-5X CNC Horizontal Machining Centers



SMW Autoblock Hydraulic Steady Rest



3" Wotan Model B75 Horizontal Boring Mill



Mazak Model Integrex 300 IV CNC Five-Axis Multi-Tasking Turning Center

734 TOTAL CUT HOURS

NEW 2013



MAZAK INTEGREX'S

Mazak Model Integrex 300 IV CNC Five-Axis Multi-Tasking Turning Center; S/N 249756, Mazak Matrix Control, HSK 40 Taper Spindle, 60" Center Distance, 25.8" Turning Diameter, 3.58" Spindle Bore, 35-4000 RPM Spindle, 40 HP Motor, Hydraulic Steady Rest, S8 - 1,000 High Pressure Coolant Through Spindle, 110-Position ATC, 10" Chuck, Chip Conveyor, Power On Hours: 4886, Auto Operation Hours: 1804, Auto Cut Hours: 1055, Total Cut Hours: 734 (New 2013) SEE PHOTO

Mazak Model Integrex 300 IV CNC Five-Axis Multi-Tasking Turning Center; S/N 204185, Mazatrol Matrix Control, HSK 40 Taper Spindle, 60" Center Distance, 25.8" Turning Diameter, 3.58" Spindle Bore, 35-4000 RPM Spindle, 40 HP Motor, Hydraulic Steady Rests, S8 - 1,000 High Pressure Coolant Through Spindle, 110-Position ATC, 10" Chuck, Chip Conveyor, Power On Hours: 24,186, Auto Operation Hours: 13,558, Auto Cut Hours: 9,021, Total Cut Hours: 7,191 (New 2008) SEE PHOTO

SMW Autoblock Hydraulic Steady Rest SEE PHOTO

(100) 40 Taper HSK Toolholders

CNC VMC'S

(2) Daewoo Model DMV-650 CNC Vertical Machining

Centers; S/Ns AV650153, AV650122, Mitsubishi CNC Control, 27.5" X 55" T-Slotted Table, 50 Taper Spindle, 8,000 RPM Spindle, 49.6" X-Axis, 25.6" Y-Axis, 22.9" Z-Axis (New as 1998) SEE PHOTO

CNC HMC'S

(2) Mazak Model H630-5X CNC Horizontal Machining Centers; S/N 126706, 127256, Mazatrol M Plus CNC Control, 19.69" X 19.69" Pallets, 160 Position ATC, 50 Taper Spindle, 15,000 RPM Spindle, 27.9" X-Axis, 31.5" Y-Axis, 29.5" Z-Axis, Chip Conveyors, (New 1997) SEE PHOTO

Mazak Model Pallatech ACM 100 20-Pallet System; Intelligent Mazatrol FMS Control, (2) Loading Stations (320) 50 Taper Toolholders

CNC TC'S

Daewoo Model Puma 200C CNC Turning Center; S/N PM200227, Mitsubishi Control, 20.8" Max Swing Over Bed, 12.99" Max Swing Over Saddle, 13.78" Max Turning Diameter, 15.75" Max Turning Length, 2.99" Spindle Bore, 2.56" Max Bar Capacity, 50-5000 RPM Spindle, 11/15 HP Motor, 12" Chuck, 12-Position Turret, Chip Conveyor (New 1997) SEE PHOTO

Daewoo Puma Model 10HC CNC Turning Center; S/N PH100771, Mitsubishi Control,

19.7" Max Swing Over Bed, 12.99" Max Swing Over Saddle, 14.6" Max Turning Diameter, 20.7" Max Turning Length, 3.38" Spindle Bore, 2.9" Max Bar Capacity, 35-3500 RPM Spindle, 25/30 HP Motor, 12" Chuck, 12-Position Turret, Chip Conveyor (New 1997)

CAMSHAFT GRINDERS

10" X 84" Berco Model RAC2130 Crankshaft Grinder; S/N 287B, Mitutoyo DRO SEE PHOTO

10" X 60" Berco Model RAC Crankshaft Grinder; S/N 119B SEE PHOTO

(2) 20" X 60" Berco Model RTM260A Crankshaft Grinders; S/N 920B, 28" Grinding Wheel, (2) 7" Three-Jaw Chucks, Coolant, Dresser SEE PHOTO

OD & ID GRINDERS

16" X 36" Storm Vulcan Plain O.D. Grinder

10" X 48" Landis Plain O.D. Grinder

Heald Model 73 CNC I.D. Grinder; Mitsubishi Controls Storm Vulcan Polisher

FLOW BENCH

Superflow Model SF-600 Flow Bench SEE PHOTO

James Stanley Model D38923 Fuel Injection Flow Bench

BALANCER

Stewart-Warner Model 2000 Balancer; S/N 900420, 500 Lb Capacity, 1/2" - 43" Between Bearings, 1/2" - 7.5" at Bearings, 4.5" - 55" Between Bearing Surfaces, .00002" Peak to Peak Sensitivity, 24" Drive Diameter Capacity, 450 RPM Normal Balancing Speed

CMM

Zeiss Model Contura G2 10.12.6 Coordinate Measuring Machine; S/N 200708500957, 40" X-Axis, 48" Y-Axis, 24" Z-Axis (New 2007) SEE PHOTO

HORIZONTAL BORING MILL

3" Wotan Model B75 Horizontal Boring Mill; S/N 58265, DRO, 31" X 39" Built In Rotary Table, 1000 RPM Spindle SEE PHOTO

TOOLROOM MACHINERY

3 HP Amura Model 3KVHD Vertical Mill w/ DRO

3 HP Comet Vertical Mill w/ DRO SEE PHOTO

Enco Vertical Mill w/ DRO

Lagun Model FTV-25 Vertical Mill w/ DRO

21" X 80" Mazak Geared Head Engine Lathe; S/N 25283 SEE PHOTO

17" X 60" Sharp Model 1760K Geared Head Engine Lathe; S/N 73277



(25) 20' Storage Containers



Chevy 3500 Steel Flat Bed Truck



Mazak Model Integrex 300 IV CNC Five-Axis Multi-Tasking Turning Center



21" X 80" Mazak Geared Head Engine Lathe



60 HP Ingersoll Rand Model SSR-EP60 Cabinet Enclosed Rotary Screw Air Compressor

14" X 40" Jet Model GH-1440ZX Geared Head Engine Lathe; S/N 05751

IMP Speed Lathe

10" X 16" Jet Horizontal Band Saw

Sunnen Model MBB-1660 Hone

Trent Model M2-WOF-331 Electric Batch Oven; S/N 885-336, 550 Fahrenheit Max Temp

Grieve Model HX-650 Electric Batch Oven; S/N 24022

Clausing Floor Drill

(3) 12" Disc/ 6" Belt Combo Sanders

(2) Makino Tool & Cutter Grinders

(2) Drill Sharpeners

(6) Vidmar Tooling Cabinets

40" X 40" Trinco Model 40X40SL/BP Blast Cabinet; S/N 73019-13

Machine Tool Accessories

Including; Perishable Tooling, Vises, Rotary Table

BOBCAT

Bobcat Model S175 Skid Steer Truck
SEE PHOTO

TRUCK

Chevy 3500 Steel Flat Bed Truck
SEE PHOTO

TRAILERS

2005 - Parker Trailer Dump Trailer; VIN# 13ZGD162461000386
SEE PHOTO

20' Tandem Axle Flat Bed Tilt Deck Trailer

20' Tandem Axle Flat Bed Trailer

LIFT TRUCKS

(3) 3,000 LB Hyster Model H30FT LP Gas Solid Tire Lift Trucks (New as 2008)
SEE PHOTO

GOLF CARTS

(9) EZ-GO Electric Golf Carts w/ Chargers; Some with Beds and Some with additional seating
SEE PHOTO

(4) EZ-GO Electric Gold Carts (Out of Service)

STORAGE CONTAINERS

(25) 20' Storage Containers
SEE PHOTO

AIR COMPRESSORS

60 HP Ingersoll Rand Model SSR-EP60 Cabinet Enclosed Rotary Screw Air Compressor; S/N CA1676U00239, 244 CFM, 125 PSIG (New 2000) SEE PHOTO

50 HP Quincy Model QSF-50-125 Cabinet Enclosed Rotary Screw Air Compressor; S/N UNO5432

25 HP Kaeser Model AS31 Cabinet Enclosed Rotary Screw Air Compressor; S/N 3111229, 109CFM, 125 PSIG

(3) 10 HP Horizontal Tank Mounted Air Compressors

Quincy Model QPNC-1000 Air Dryer; S/N 0408-QR983958-ST, 1000 SCFM, 450 PSIG

300 Gallon Air Receiving Tank

COOLING TOWER

Amtcot Model ST-PP-50 Cooling Tower; S/N 99688, 600,000 BTU/HR Cooling Capacity, 11,500 CFM, 105 GPM Water Flow (New 2012)

SHOP EQUIPMENT

(24) Sections of H.D. Adjustable Beam Pallet Racking w/ Decking

(108) Sections of Steel Shelving

(10) Dump Hoppers

Portable Sump Pump

1/2 Ton X 30' Long Monorail Crane System w/ Uprights

1/4 Ton X 15' Able Howe Floor Standing Jib Crane

(2) Uni-Ram Model R4L Parts Washers

Rigid 300 Pipe Threader

OFFICE EQUIPMENT

Large Quantity of Office Equipment Including; Desks, File Cabinets, Lateral File Cabinets, Chairs, Office Partitioning, Breakroom Furniture, Lobby Furniture & Related



Superflow Model SF-600 Flow Bench



3 HP Comet Vertical Mill w/ DRO

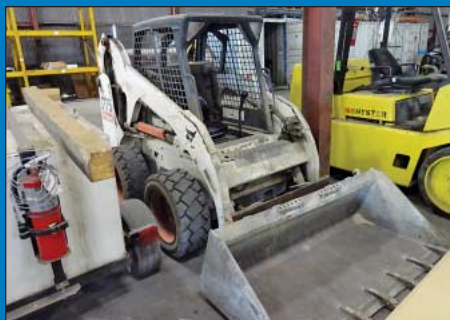


(3) 3,000 LB Hyster Model H30FT LP Gas Solid Tire Lift Trucks

WEBCAST BIDDER INSTRUCTIONS

> All Internet bidders must register for this auction at www.bidspotter.com at least 48-Hours Prior to the Sale Date, **if you do not you will not be approved.**

> All Internet bidders must Post a Deposit of Approx. 25% of Your Planned Spending Budget or \$5,000.00 Minimum with Cincinnati Industrial Auctioneers in Order to be approved to Bid. Those who do Not Post the Deposit Will Not be Approved. **Period.**



Bobcat Model S175 Skid Steer



2005 - Parker Trailer Dump Trailer



(9) EZ-GO Electric Golf Carts w/ Chargers

PUBLIC AUCTION

Surplus to Needs of

CONTINENTAL MOTORS, INC.

9503 Middlex Drive – San Antonio, TX 78217
Near the San Antonio International Airport

SALE DATE:
Tuesday, January 10th
STARTING: 9:00 AM CST

INSPECTION:
Monday, January 9th
10:00 AM to 4:00 PM



CINCINNATI INDUSTRIAL AUCTIONEERS

auctioneers | appraisers | since 1961

Contact Information
2020 Dunlap St.
Cincinnati, Ohio 45214
Phone 513-241-9701
Fax 513-241-6760
www.cia-auction.com



(2) Mazak Integrex's



(2) Daewoo DMV-650's



Crankshaft Grinders



Toolroom Machinery

FIRST CLASS MAIL!

PRE-SORT
FIRST CLASS
U.S. POSTAGE
PAID
CINCINNATI, OHIO
PERMIT NO. 3593

Important Mail

TO BE DIRECTED TO THE ATTENTION
OF EXECUTIVE PERSONNEL

TUESDAY, JANUARY 10TH

PUBLIC AUCTION

Surplus to Needs of

CONTINENTAL MOTORS, INC.

9503 Middlex Drive
San Antonio, TX 78217

Near the San Antonio International Airport

IMPORTANT NOTICE:

Although information has been obtained from sources deemed reliable, the auctioneer makes no warranty or guarantee, expressed or implied, as to the accuracy of the information herein contained. It is for this reason that buyers should avail themselves of the opportunity to make inspection prior to the sale. This brochure is intended to provide general information of the equipment being offered and is subject to errors, omissions, additions or deletions. Please check with the Auctioneer's Office for a final listing. Items offered may or may not necessarily be sold as described and/or photographed in this brochure.

MAIL BIDS ACCEPTED WITH A 25% DEPOSIT

DIRECTIONS

From Downtown San Antonio Proceed North on US-281 North for 6 Miles to the Airport Blvd Exit. Continue on Airport Blvd for 0.2 Mile to Right Turn onto I-410 Access Rd/410 Loop. Proceed on I-410 Access Rd for 0.8 Mile to Left Turn onto Broadway St. Continue 0.7 Mile on Broadway to Left Turn onto Mannix Dr. Proceed 0.2 Mile to Right Turn on Middlex Drive. Proceed 0.1 Mile to Sale Site on Left. Watch for Auction Signs and Auction Parking.

AUCTIONEERS

Jeffrey L. Luggen – Texas License No. 00011379
Joseph M. Luggen – Texas License No. 16984



TERMS OF SALE

All equipment described herein will be sold "as is", "where is" to the highest bidder or bidders for cash in accordance with our regular terms and conditions of sale. Unless other satisfactory arrangements are made, a **25% deposit** in cash, certified or cashier's check payable to Cincinnati Industrial Auctioneers, Inc., is **required on all purchases**. Firm and personal checks accepted only if accompanied by a letter from your bank guaranteeing your funds. All sales are subject to state and/or local taxes unless a signed exemption form is presented at the time of purchase. **All balances are due at the conclusion of the sale.** No merchandise may be removed while the sale is in progress. **All bidders must comply with our Standard Terms of Sale**, copies of which will be available at the sale site or can be obtained from our website.

15% ONSITE BUYER'S PREMIUM
18% ONLINE BUYER'S PREMIUM



Sale Under The Management Of

CINCINNATI INDUSTRIAL AUCTIONEERS

auctioneers | appraisers | since 1961 | cia-auction.com | info@cia-auction.com
2020 Dunlap St., Cincinnati, Ohio 45214 Phone 513-241-9701 Fax 513-241-6760